

# Community Optometry

helping those with learning difficulties

Danielle Ross





Photo by [Séan Gorman](#) on [Unsplash](#)





Photo by [pan xiaozhen](#) on [Unsplash](#)





**Donald J. Trump** ✓

@realDonaldTrump

 [Follow](#)

It's snowing & freezing in NYC. What the hell ever happened to global warming?

10:25 AM - 21 Mar 2013



618

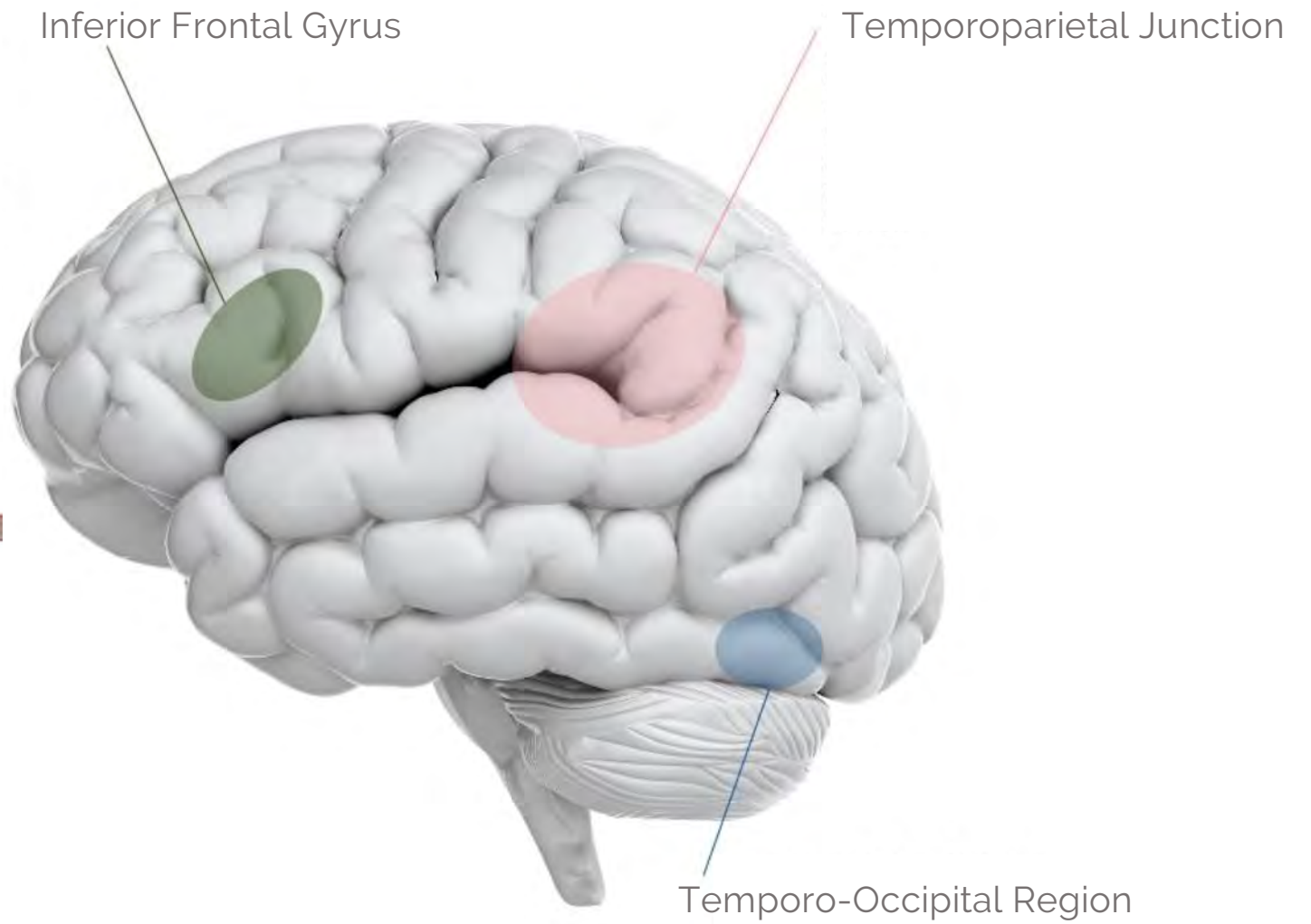


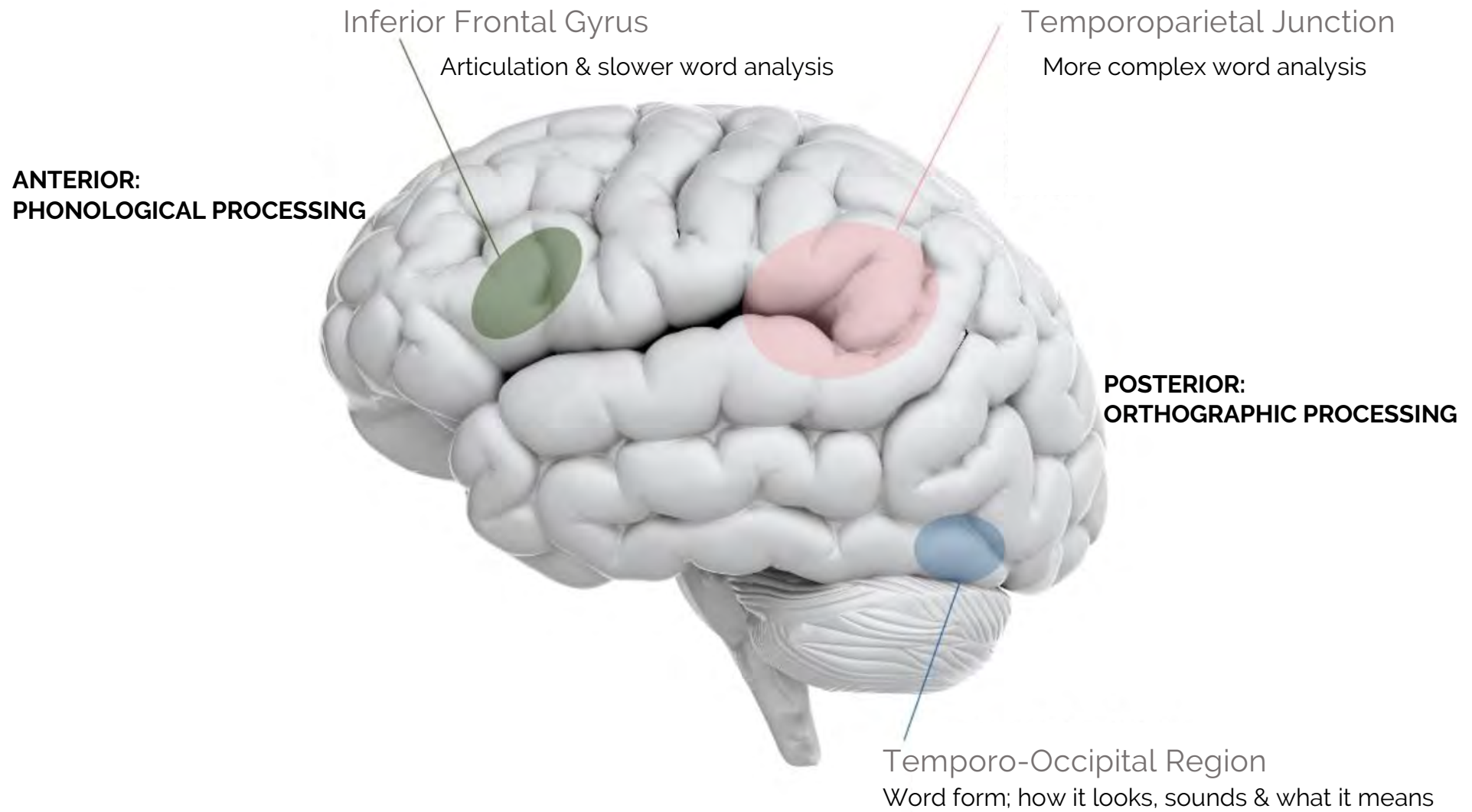
283





Photo by [pan xiaozhen](#) on [Unsplash](#)



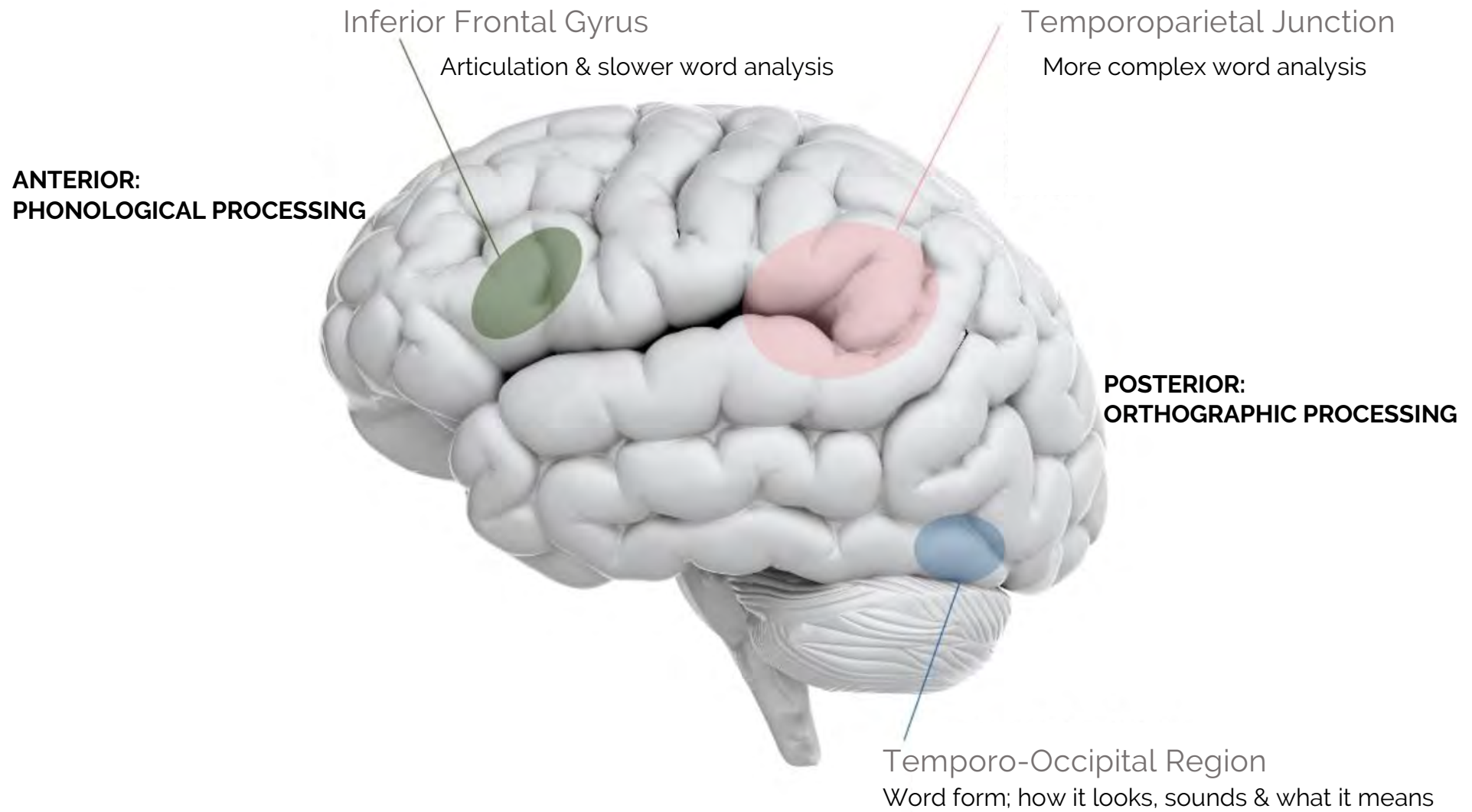




h - a - t

h - a - t

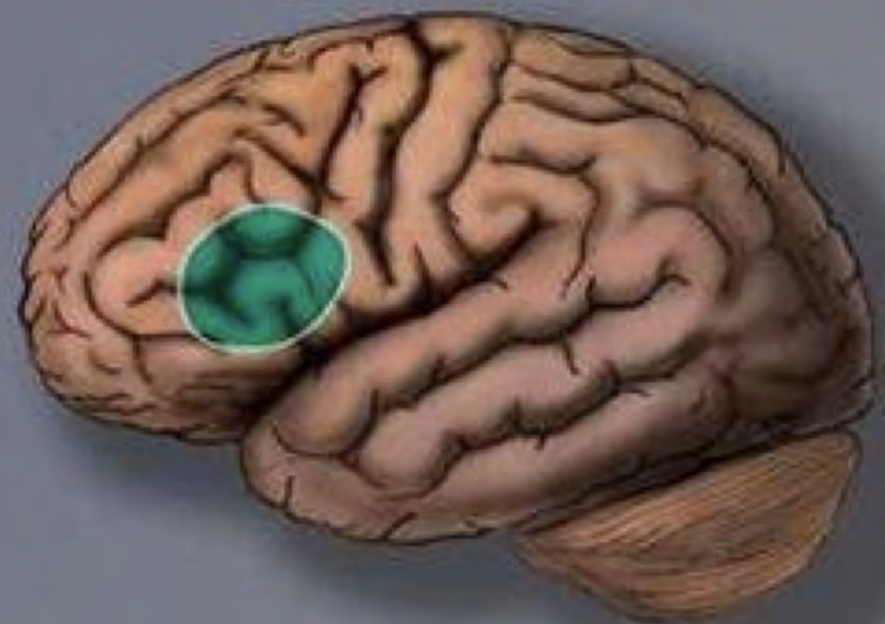
t - h - e







**Non-impaired**



**Dyslexic**

If intervention occurs after  
**7-8 years old**

74% will remain poor  
readers into adulthood





## AT SCHOOL

Teacher

Teacher aide

SENCO – special education needs coordinator

## REFERS TO

RTLB – resource teacher of learning and behavior

- Clinical psychologists
- Occupational therapists (OTs)
- Speech-language therapists (SLTs)
- Paediatricans



## PRIVATELY FUNDED / REFERRAL TO OUTSIDE OF MINISTRY OF EDUCATION



- Optometrists
- Audiologists
- Paediatricians
- General practitioners
- Educational / clinical psychologists
- SLD tutors
- Occupational therapist (OTs)
- Speech-language therapist (SLTs)

## TYPICAL MULTIDISCIPLINARY TEAM



- Teacher
- SENCO
- RTLB
- Educational / clinical psychologist
- SLD tutor
- Paediatric Occupational therapist (OTs)
- Speech-language therapist (SLTs)
- Paediatrician

**60%** OF LEARNING  
DISABILITIES  
ARE ASSOCIATED WITH  
**VISION PROBLEMS.**







Examples of distorted text

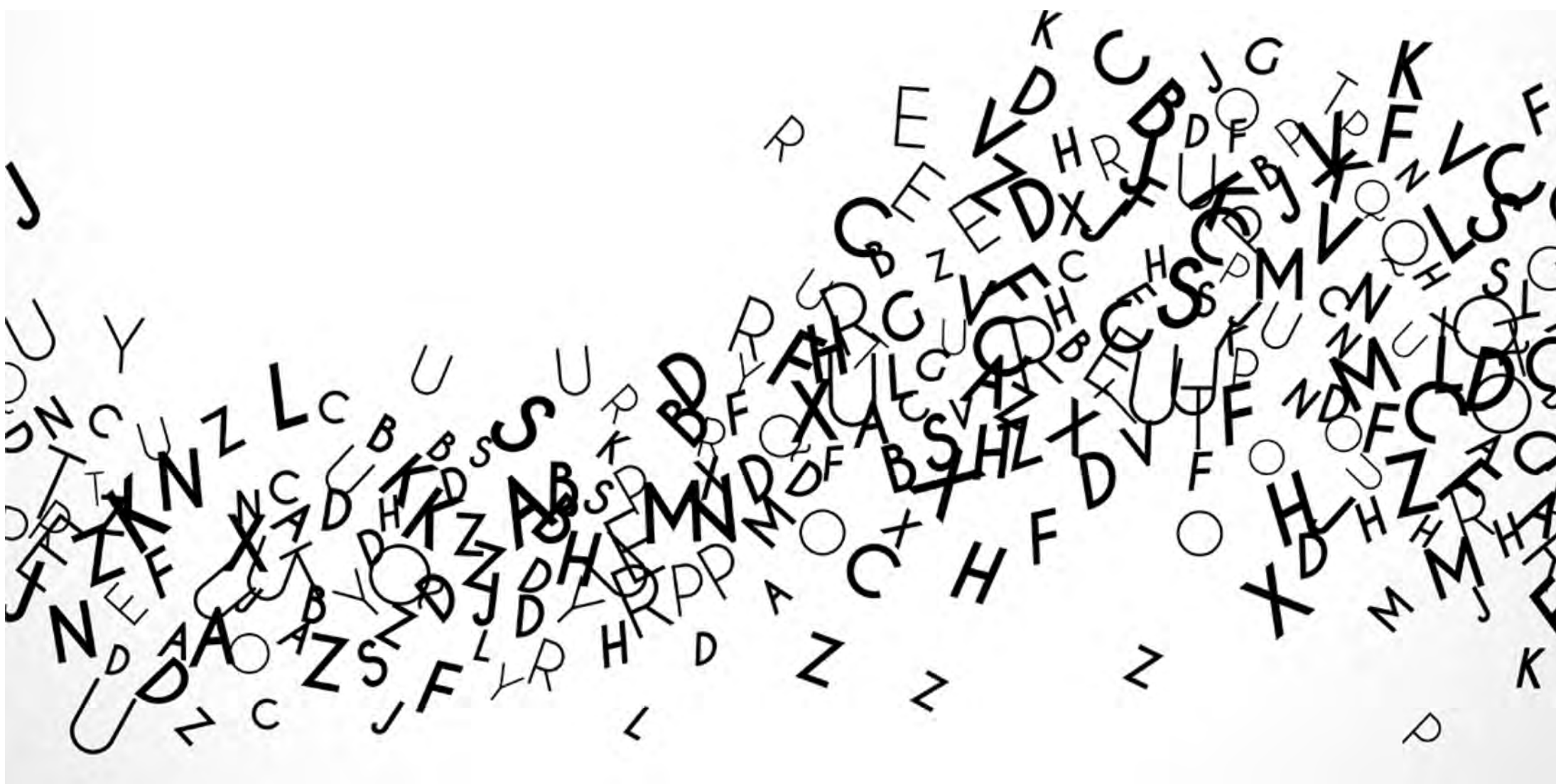
Examples of distorted text

**E**xamples of distorted text

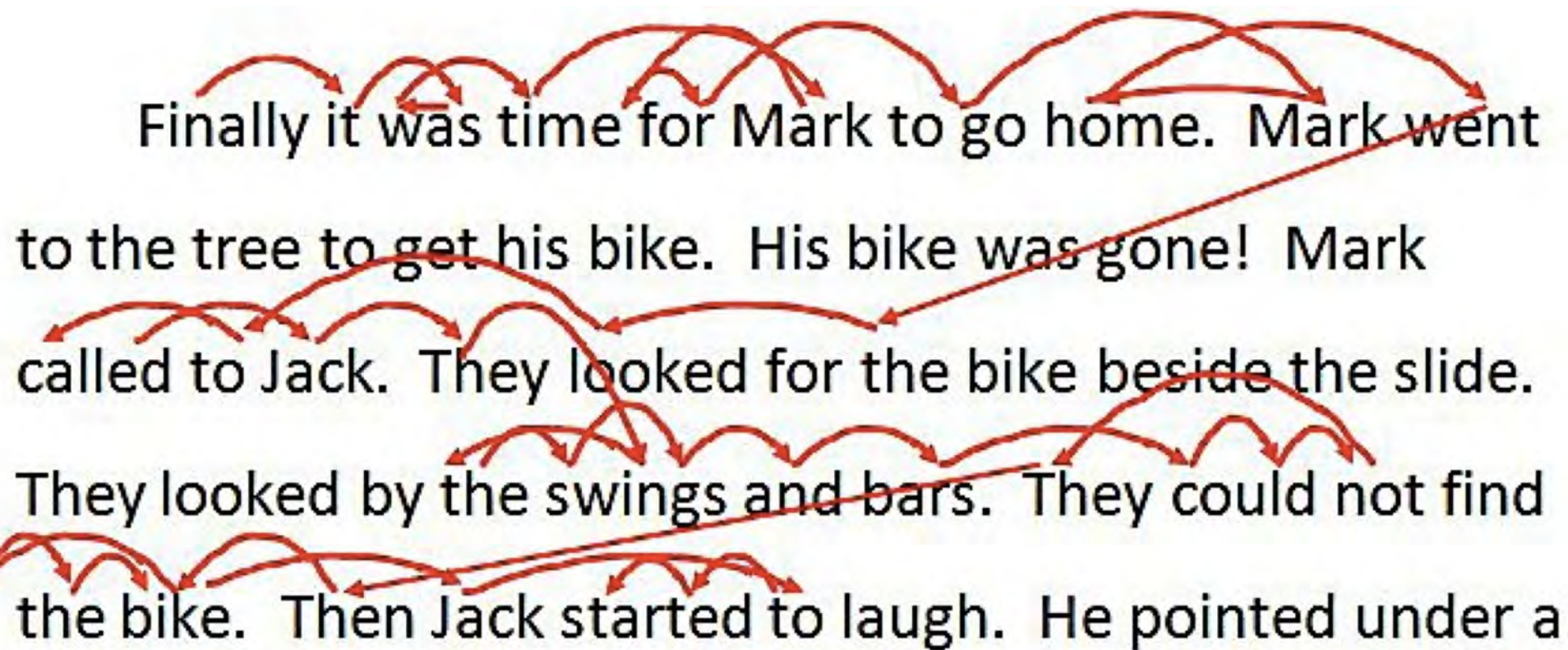
Examples of          distorted text

*Examples of distorted text*

Examples of distorted text

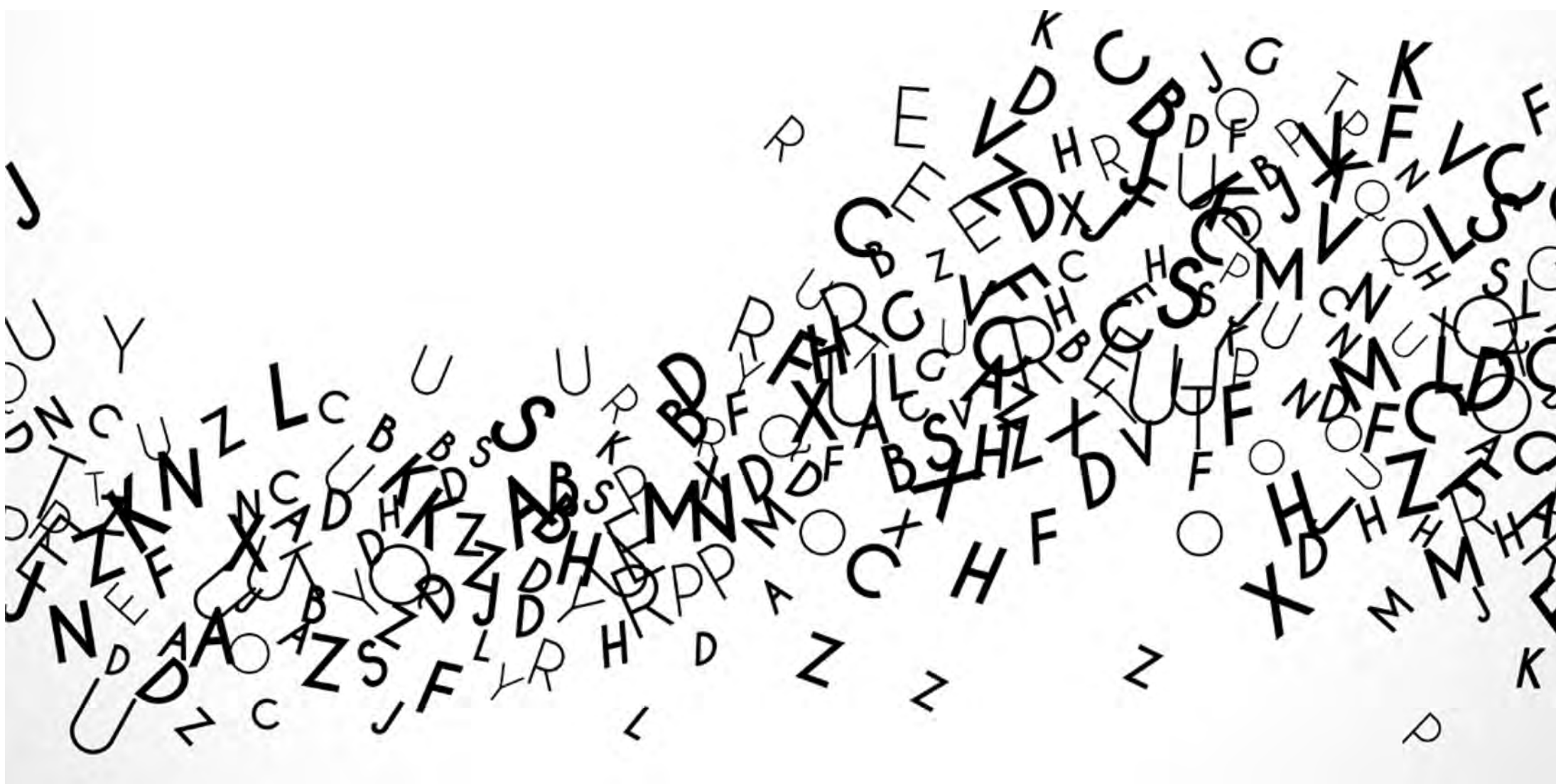






Finally it was time for Mark to go home. Mark went to the tree to get his bike. His bike was gone! Mark called to Jack. They looked for the bike beside the slide. They looked by the swings and bars. They could not find the bike. Then Jack started to laugh. He pointed under a





Arial  
Verdana  
Trebuchet  
Calibri  
Comic Sans

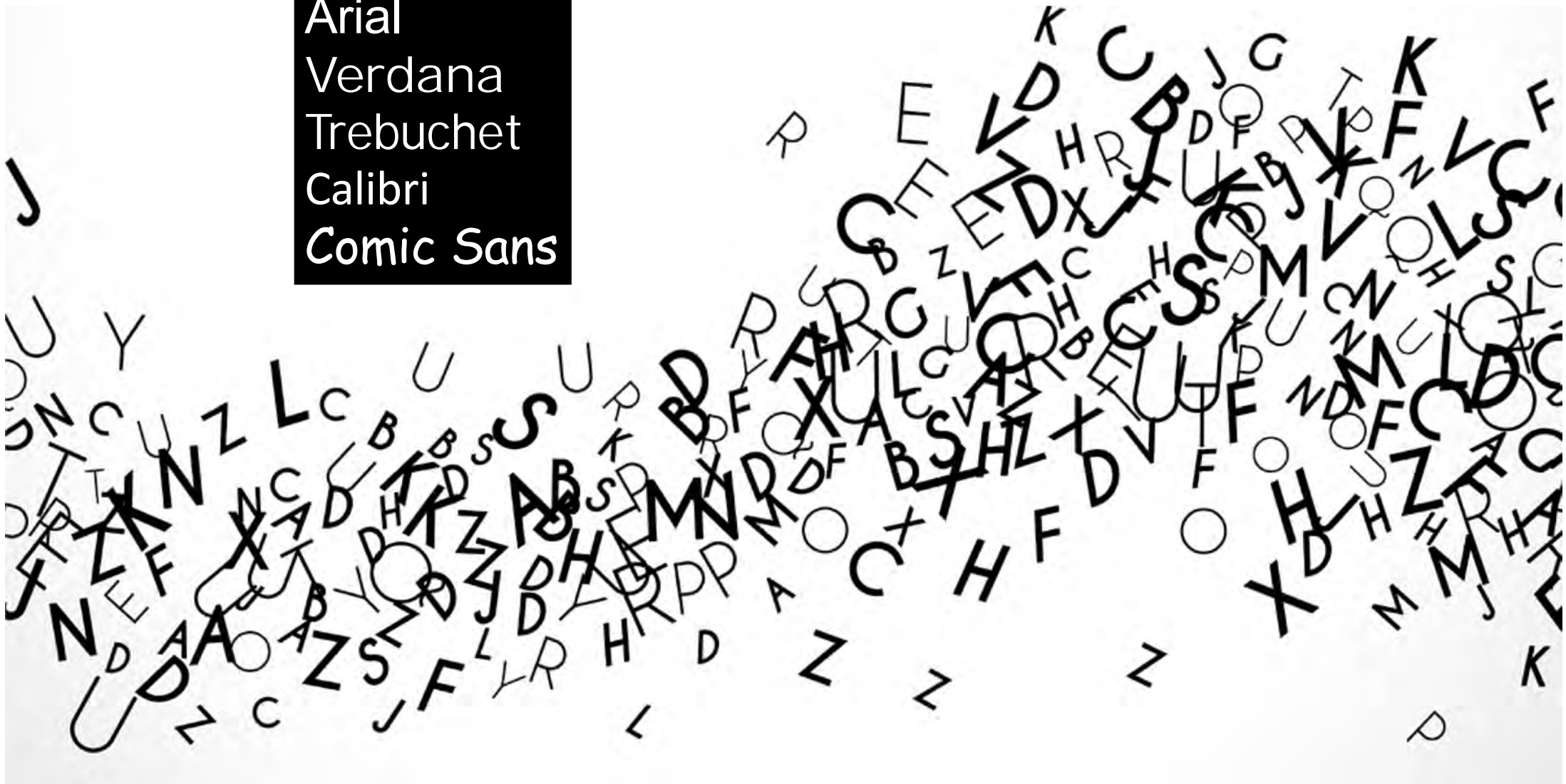






Photo by John Jennings on Unsplash

## TYPICAL MULTIDISCIPLINARY TEAM



- Teacher
  - SENCO
  - RTLB
  - Educational / clinical psychologist
  - SLD tutor
- 
- Occupational therapist (OTs)
  - Speech-language therapist (SLTs)



